

Room Paint Designs

Aura by Benjamin Moore - The Finest Paint We've Ever Made. Find Stores!

Interior Designer

Find Top-Rated Interior Decorators. Get Free Estimates & Design Ideas!

JULY/AUGUST 2004

[Email to a friend](#)

[ShareThis](#)

Best Rooms of the BSO Show House

From the dining room to the guest room, the name of the game is cool, casual and comfortable.

Fern Hill Design



"Light, bright and cottage-y," is how designer Missy Connolly describes the feel of this sun porch. Its yellow and green floral window treatments inspired the theme for the rest of the room. "I fell in love with the fabric and everything started from there," says Connolly, owner of Fern Hill, an interior design company and store in Butler. The hand-crafted floor mat, pottery and table settings all carry the curtains' color scheme, as do the live green, yellow and white orchids that make up the table's centerpiece.

An old fireplace screen, part of an exhibit in the Metropolitan Museum of Art, inspired the unusual wrought-iron chandelier, which Connolly designed and had local blacksmith Randy Slaysman forge. "I wanted something you didn't see in catalogs and all the stores," she says of the piece. Its eight "blooming lampshades" reflect the floral pattern of the drapes as well, adding to the room's springlike feel. "I love gardening and the idea was to bring the feeling of a garden inside." -Joe Sugarman

RESOURCES

Interior design by Missy Connolly, Fern Hill Design, Butler, 410-472-0320.

Ironwork by Randy Slaysman, Slaysman Forge, 410-325-8620, <http://www.slaysmanforge.com>.

Frederike's Designs



A round table and comfy sofa, both draped in silk, set a tone of casual elegance for this dining room designed by Frederike Hecht of Frederike's Designs. "A round table inspires more conversations because everyone can see each other," says Hecht. "And the sofa provides a place for an after-dinner drink."

The light-gold wall color and natural sisal rug offer a monochromatic color base that is calm and comfortable, says Hecht, while the copper-colored landscape scenes painted on the wall and the copy of the Degas painting "After the bath, Woman Drying Herself" offer visual interest.

The crystal and antique gold chandelier, modeled on a design from Wintertur, hangs above a sterling silver Victorian cake plate set in the middle of the round table. "The chandelier is the most formal thing in the room," says Hecht. The table skirt and roomy Chippendale-style chairs soften its formality.

To add a dash of whimsy, Hecht chose plant urns that are statues of dogs and nestled the antique Limoges place settings in woven straw wreaths. -Laura Wexler

RESOURCES

Interior design by Frederike Hecht, Frederike's Designs, 410-526-5882.

Mouldings by Spaide Custom Builders Inc., 410-461-0559; and Manor Style LTD, 800-325-2188.

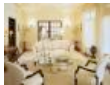
Painting by Delgado Painting, 240-351-1164.

Decorative painting by Liandra Laird, 410-296-1174.

Furniture and accessories by McLain Wiesand, Baltimore, 410-539-4440.

Flooring by The Carpet Customizer, 410-299-4380.

J. Hale & Rexroad Design



For this central room on the first floor, the goal of the J. Hale & Rexroad Design team was to create an inviting space, while seamlessly blending the design elements with the décor of adjoining rooms. Explains John Hale: "We wanted the reception room to be a place where people could experience relief and relaxation." To create this sense of harmony, the designers selected pieces that would evoke simplicity and light. "We used textures in white and off-white, with pearl and gold finish, to create a soothing ambience," says Hale.

The lustre of the acrylic coffee table, tray and crystal obelisks balance more traditional pieces such as the French console table, pedestal and vitrine. The contemporary lines of the white chenille sofa are complemented by throw pillows. The faux-painted ceiling, the creation of Christine Nicole Productions, is ornamented with small clusters of pearls and evokes the feeling of a soft, quilted fabric. The

Interior Design Styles

Save on Interior Design Styles Browse interior design ideas.

www.interiordezine.com

The Art Institutes

Pursue Your Passion - Earn a Residential Interiors Degree.

www.artinstitutes.edu

WindowsWallsCeilings

Transform your Home/Commercial area Custom, creative images

www.orangepiel.com

Coastal Interior Design

Serving the Florida Panhandle casual + coastal + refined

www.lemongrassinteriors.com

Levolor Window

Fashions

Official site. Try our virtual online blind & shade designer

www.Levolor.com

white walls are softened with a gold wash, and accented with vertical champagne stripes. The sheer embroidered drapery, bejeweled with buttons and cascading pearl trim, allows light to bathe the room. -Laurie Legum

RESOURCES

Interior design by J. Hale & Rexroad Design, Baltimore, 410-669-0410.
Benjamin Moore paints from Budeke's Paints, Fells Point, 410-732-4354.
Custom painting by Christine Nicole Productions Inc., Glen Burnie, 443-286-2304.
Carpet from Carpet World, Timonium, 410-667-0620.
Furniture from Niermann Weeks, <http://www.neirmann-weeks.com>.
Beachley of Maryland Furniture Co., Ellicott City, 410-552-4016.
Regency Gallery, Ellicott City, 410-465-3005.
Lighting by Jones Lighting Specialists, Towson, 410-828-1010.

Marcy Sagel & Associates



"For this room, I wanted to create an atmosphere that was inviting, with contemporary touches, and not overly formal," says designer Marcy Sagel. "But because the house is very traditional, I wanted to do something that wasn't too jarring." Sagel set about creating the space by first laying down a neutral wool sisal rug to anchor the room. The mocha-colored walls were custom finished by The Valley Craftsmen using a three-color layering process. "There was not a huge amount of light in the room, so I didn't want it to get too dark," says Sagel. The wall mouldings were outlined in a contrasting caramel shade, and the ceiling was painted a pale cream to help reflect light.

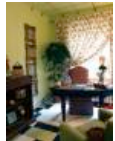
The walnut, Louis XVI-style armoire was the first item selected for the room, and the other substantial pieces in the room (the bedside tables, Swedish writing desk and regency fret chair; all designed by D.C.-based artisan David Iatesta) were chosen for their modern lines yet traditional feel. Sagel's love of "lots of linens and natural fabrics" is reflected in the choice of the bold, graphic-patterned fabric (Schumacher's linen "Tissu Fleuri") used to dress the bed and upholster the headboard. Use of art is another hallmark of Sagel's style: "I always like to leave room for some dramatic, contemporary pieces to serve as accents," she says.

"Because it's a guest room, it should be simple and not cluttered with accessories," Sagel says. "It should have a calming, inviting atmosphere that works for both genders. The goal here was clean-lined simplicity, uncluttered and infused with great art." -Brian Lawrence

RESOURCES

Interior design by Marcy Sagel & Associates, Canton, 410-276-3033.
Benjamin Moore paints from Budeke's Paints, Fells Point, 410-732-4354.
Custom painting by The Valley Craftsmen, 410-366-7077.
Carpet by Greenspring Carpet Source, Timonium, 410-561-9200.
Headboard upholstered by Encore Upholstering Co., Arbutus, 410-242-6692.
Scones and lamps by Niermann Weeks, <http://www.neirmann-weeks.com>.
Armoire from Gaines McHale, Federal Hill, 410-625-1900.
Furniture by David Iatesta/August Georges, Washington, D.C., 202-537-5110.
Bed linens from Yves Delorme, Green Spring Station, 410-828-4777.
Artwork from Goya-Girl Contemporary Gallery, Mill Center, 410-366-2001.

The Furniture Solution



A film buff, interior designer Tracey Davidson used the classic film "Pillow Talk" as a source of inspiration.

Influenced by the set design in the film, Davidson mixed modern and traditional elements throughout the den. "We wanted to create a fun, feminine, whimsical room with an air of maturity." The result is a vivid space, popping with color, and feminine touches.

The contrast between old and new is apparent throughout the room. A black kidney-shaped desk, covered in zebra skin, is accessorized with an antique rotary phone and clock. The pink marabou-fringed lampshade floats atop a gilded lamp base. The pink and green floral drapery, which inspired the room's color palette, plays against touches of lush animal fabric.

For the design project, Davidson collaborated with decorative artist Paula Douglas. Explains Davidson: "Paula is great at finding solutions to design problems." One such problem was the floor. "The floor was vinyl parquet. Just wrong. I decided to paint the tile, using a special primer for glossy surfaces, along with porch and patio paint," says Douglas. The result is a stunning "new" floor, painted in rich shades of pear, primrose and black.

On the ceiling, Douglas reversed the floor pattern, creating a grid with gaffer's tape. Tassels were attached to the parameter of the grid, defining the border, as well as adding a touch of whimsy. The apple green walls were adorned with informal tromp l'oeil box molding, introducing a bit more architecture to the room, while creating a relaxed feel. The overall result is a cozy, retro-inspired space that would appeal even to Doris Day. -Laurie Legum

RESOURCES

Interior design by Tracey Davidson, The Furniture Solution, 410-480-1484.
Custom painting by Paula Douglas, Decorative Artist, 301-496-0942.
Benjamin Moore paints from Budeke's Paints, Fells Point, 410-732-4354.
Carpet by Standard Carpets, Ellicott City, 410-750-6080.
Fabrics by Mari Carney of Robert Allen Fabrics, 800-333-3777.

[Add Comment \(0\)](#)



An Alter Communications publication -- please be sure to check out our other publication's websites for a complete resource guide to Maryland living.

www.chesapeakelifemag.com www.jewishtimes.com
[Privacy Policy](#)